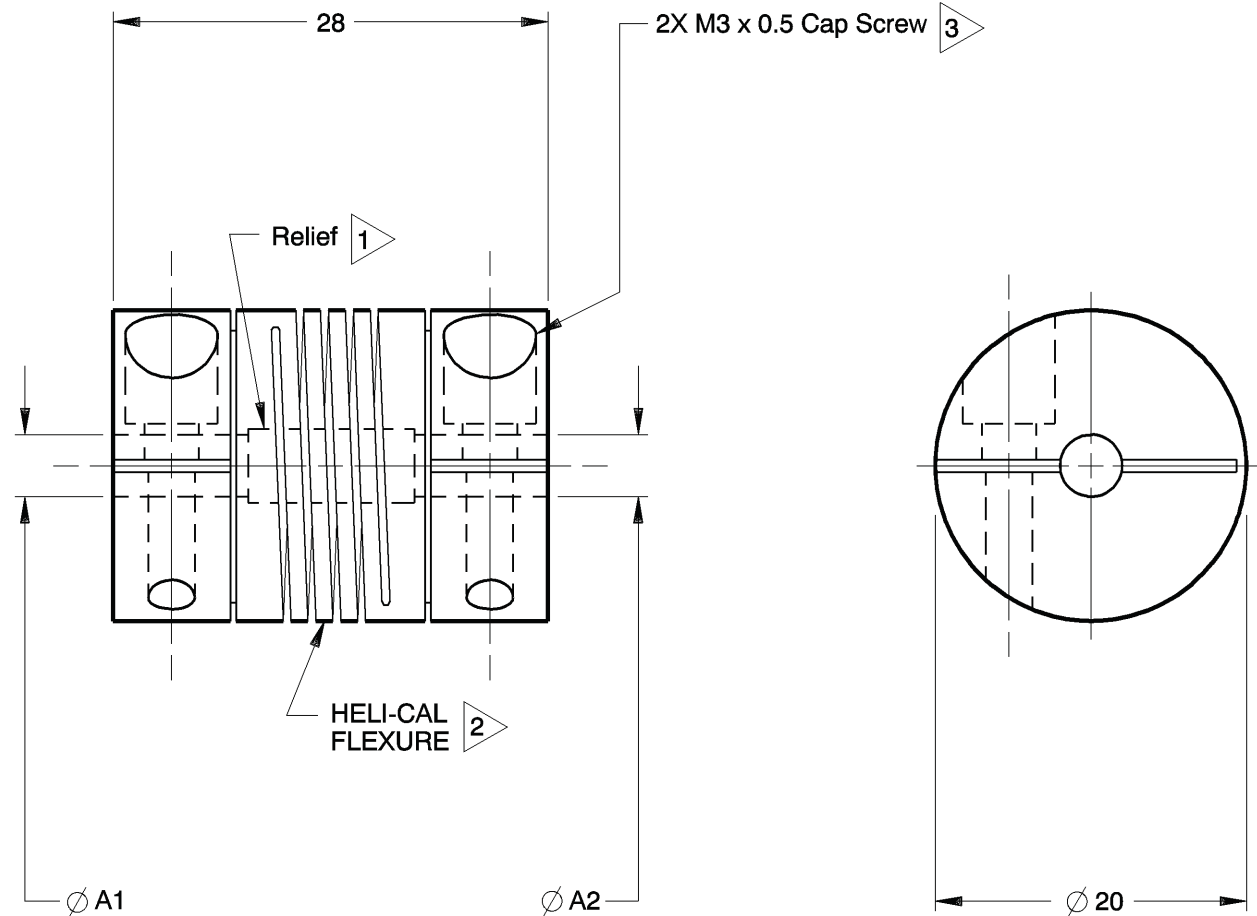


NOTES: See Tabulated Sheet

- 1 Relief permits component shafts to near butt.
- 2 Hubs and HELI-CAL FLEXURE are made from a single piece of material.
- 3 Integral Clamp attachment, hex. socket, ISO std., cap screw furnished: both hubs.
- 4 Backlash: None. No lubrication required.
- 5 Permitted axial motion from free length: $\pm 0.25\text{mm}$
- 6 RPM: Up to 10,000, depending upon application.
- 7 Working torque ratings are based upon continuous duty with noted misalignments applied separately and may be increased with improved alignment:
See Tabulated Sheet
- 8 Permissible shaft misalignment:
Angular, up to 5 degrees.
Offset, up to 0.25mm (TIR, 0.50mm)
- 9 Part will have a 23.61mm Clearance Diameter on both ends when any bore is over 6.35mm thru 9.81mm.



WAC20-4mm-4mm SHOWN

NOTICE: THE INFORMATION AND DATA CONTAINED HEREIN IS CONSIDERED PROPRIETARY TO HELICAL PRODUCTS COMPANY, INC., AND SHALL REMAIN THE EXCLUSIVE PROPERTY OF HELICAL. THE HOLDER WILL ASSUME CUSTODY AND CONTROL THAT THIS DOCUMENT WILL NOT BE COPIED, REPRODUCED OR DISCLOSED WITHOUT THE EXPRESS WRITTEN CONSENT OF HELICAL. POSSESSION OF THIS DOCUMENT DOES NOT CONSTITUTE A GRANT TO MANUFACTURE ANY ITEMS.

DO NOT SCALE DRAWING.

01-25-10	---	Finish was Chromic Acid Anodize; Updated GD&T	JAJ	HG
9-14-98		Clerical format update/ No revision	BJM	MC
DATE	LTR	REVISION	CHK	

Unless otherwise noted dimensions in millimeters.

Tolerances are:
Decimals: X $\pm .5\text{mm}$
 X.X $\pm .25\text{mm}$
 X.XX $\pm .15\text{mm}$
Angles: ± 2 degrees
Break sharp corners .25mm max.

APPROVALS	DATE
DRAWN MC	8-8-78
CHECKED GLB	8-8-78
PRODN APA	8-8-78
ISSUED	
WEIGHT	21g (calc)
SCALE 2/1	SIZE A

<p>HELICAL PRODUCTS CO., INC. P.O. BOX 1069 SANTA MARIA, CA. 93456 U.S.A PHONE (805) 928-3851 FSC13201</p>		TITLE	HELICAL FLEXIBLE SHAFT COUPLING
		MATERIAL	7075-T6 Aluminum Alloy
		FINISH	Anodize IAW HPS1000
		DWG NO	WAC20

ADDITION DATE	PART NUMBER	BORE TOLERANCES		TORQUES (Nm)			TORSIONAL FLEXIBILITY deg/Nm	MASS MOMENT OF INERTIA	COMMENTS	A1	A2
		+.002in -.000in	or +.05mm -.00mm	Non-reversing	Shock or Reversing	Momentary					
		A1 Dia	A2 Dia								
09 Dec 04	WAC20-4mm-3M	4.00mm	.090in	.65	.32	1.3					
	WAC20-4mm-3mm	4.00mm	3.00mm	.65	.32	1.3					
06 Feb 04	WAC20-4mm-4M	4.00mm	.120in	.65	.32	1.3					
03 May 88	WAC20-4mm-4	4.00mm	.125in	.65	.32	1.3					
09 Mar 88	WAC20-4mm-4mm	4.00mm	4.00mm	.65	.32	1.3					
09 Mar 88	WAC20-4mm-5mm	4.00mm	5.00mm	.60	.30	1.2					
09 Mar 88	WAC20-4mm-8	4.00mm	.250in	.55	.27	1.1					
	WAC20-4.5mm-4mm	4.50mm	4.00mm	.65	.32	1.3					
09 Mar 88	WAC20-4.75mm-4.75mm	4.75mm	4.75mm	.65	.32	1.3					
	WAC20-6-3mm	.188in	3.00mm	.60	.30	1.2					
09 Mar 88	WAC20-6-4	.188in	.125in	.60	.30	1.2					
	WAC20-6-5	.188in	.157in	.60	.30	1.2					
03 May 88	WAC20-6-4mm	.188in	4.00mm	.60	.30	1.2					
11 Sep 89	WAC20-6-6	.188in	.188in	.60	.30	1.2					
09 Mar 88	WAC20-5mm-3mm	5.00mm	3.00mm	.60	.30	1.2					
09 Mar 88	WAC20-5mm-4M	5.00mm	.120in	.60	.30	1.2					
25 Jul 05	WAC20-5mm-4	5.00mm	.125in	.60	.30	1.2					
09 Mar 88	WAC20-5mm-4mm	5.00mm	4.00mm	.60	.30	1.2					
03 May 88	WAC20-5mm-6	5.00mm	.188in	.60	.30	1.2					
09 Mar 88	WAC20-5mm-5mm	5.00mm	5.00mm	.60	.30	1.2					
09 Mar 88	WAC20-5.85mm-4mm	5.85mm	4.00mm	.55	.27	1.1					

* NOTE: Bores greater than 6.35mm Dia: bore depth is 9.70mm

NOTICE: THE INFORMATION AND DATA CONTAINED HEREIN IS CONSIDERED PROPRIETARY TO HELICAL PRODUCTS COMPANY, INC., AND SHALL REMAIN THE EXCLUSIVE PROPERTY OF HELICAL. THE HOLDER WILL ASSUME CUSTODY AND CONTROL THAT THIS DOCUMENT WILL NOT BE COPIED, REPRODUCED OR DISCLOSED WITHOUT THE EXPRESS WRITTEN CONSENT OF HELICAL. POSSESSION OF THIS DOCUMENT DOES NOT CONSTITUTE A GRANT TO MANUFACTURE ANY ITEMS.

ADDITIONAL BORE SIZES AVAILABLE UPON REQUEST

APPROVALS	DATE	HELICAL PRODUCTS CO. INC P.O. BOX 1069 SANTA MARIA, CA. 93456 U.S.A PHONE (805) 928-3851 FSCI3201
DRAWN		
CHECKED		TITLE
PRODN		HELICAL FLEXIBLE SHAFT COUPLING
ISSUED	3/23/2011 7: 39: 32 AM	TABULATED BORE SIZES
		DWG NO WAC20

Printed 3/23/2011 7: 40: 35 AM by larryvg

ADDITION DATE	PART NUMBER	BORE TOLERANCES		TORQUES (Nm)			TORSIONAL FLEXIBILITY	MASS MOMENT OF INERTIA	COMMENTS	A1	A2
		+.002in -.000in	or +.05mm -.00mm	Non-reversing	Shock or Reversing	Momentary					
		A1 Dia	A2 Dia								
09 Mar 88	WAC20-6mm-3mm	6.00mm	3.00mm	.55	.27	1.1					
09 Mar 88	WAC20-6mm-4M	6.00mm	.120in	.55	.27	1.1					
	WAC20-6mm-4	6.00mm	.125in	.55	.27	1.1					
03 May 88	WAC20-6mm-3.5mm	6.00mm	3.50mm	.55	.27	1.1					
	WAC20-6mm-5	6.00mm	.157in	.55	.27	1.1					
09 Mar 88	WAC20-6mm-4mm	6.00mm	4.00mm	.55	.27	1.1					
09 Mar 88	WAC20-6mm-4.2mm	6.00mm	4.20mm	.55	.27	1.1					
09 Mar 88	WAC20-6mm-6	6.00mm	.188in	.55	.27	1.1					
09 Mar 88	WAC20-6mm-5mm	6.00mm	5.00mm	.55	.27	1.1					
	WAC20-6mm-5.02mm	6.00mm	5.02mm	.55	.27	1.1					
09 Mar 88	WAC20-6mm-6mm	6.00mm	6.00mm	.55	.27	1.1					
	WAC20-6mm-6.02mm	6.00mm	6.02mm	.55	.27	1.1					
09 Mar 88	WAC20-6mm-8	6.00mm	.250in	.55	.27	1.1					
09 Mar 88	WAC20-8M-4M	.240in	.120in	.55	.27	1.1					
	WAC20-8-3mm	.250in	3.00mm	.55	.27	1.1					
09 Mar 88	WAC20-8-4M	.250in	.120in	.55	.27	1.1					
09 Mar 88	WAC20-8-4	.250in	.125in	.55	.27	1.1					
09 Mar 88	WAC20-8-4mm	.250in	4.00mm	.55	.27	1.1					
16 Jan 89	WAC20-8-4.5mm	.250in	4.50mm	.55	.27	1.1					
03 May 88	WAC20-8-6	.250in	.188in	.55	.27	1.1					
09 Mar 88	WAC20-8-5mm	.250in	5.00mm	.55	.27	1.1					
	WAC20-8-5.7mm	.250in	5.70mm	.55	.27	1.1					
09 Mar 88	WAC20-8-5.8mm	.250in	5.80mm	.55	.27	1.1					
09 Mar 88	WAC20-8-6mm	.250in	6.00mm	.55	.27	1.1					
09 Mar 88	WAC20-8-8	.250in	.250in	.55	.27	1.1					
	WAC20-7mm-4mm	* 7.00mm	4.00mm	.55	.27	1.1			Clearance Diam.:	23.61mm	
	WAC20-7mm-5mm	* 7.00mm	5.00mm	.55	.27	1.1			Clearance Diam.:	23.61mm	
	WAC20-7mm-6mm	* 7.00mm	6.00mm	.55	.27	1.1			Clearance Diam.:	23.61mm	
05 Jun 89	WAC20-7mm-7mm	* 7.00mm	* 7.00mm	.55	.27	1.1			Clearance Diam.:	23.61mm	
24 Sep 02	WAC20-10-6	* .313in	.188in	.55	.27	1.1			Clearance Diam.:	23.61mm	
	WAC20-8mm-3mm	* 8.00mm	3.00mm	.55	.27	1.1			Clearance Diam.:	23.61mm	

* NOTE: Bores greater than 6.35mm Dia: bore depth is 9.70mm

NOTICE: THE INFORMATION AND DATA CONTAINED HEREIN IS CONSIDERED PROPRIETARY TO HELICAL PRODUCTS COMPANY, INC., AND SHALL REMAIN THE EXCLUSIVE PROPERTY OF HELICAL. THE HOLDER WILL ASSUME CUSTODY AND CONTROL THAT THIS DOCUMENT WILL NOT BE COPIED, REPRODUCED OR DISCLOSED WITHOUT THE EXPRESS WRITTEN CONSENT OF HELICAL. POSSESSION OF THIS DOCUMENT DOES NOT CONSTITUTE A GRANT TO MANUFACTURE ANY ITEMS.

ADDITIONAL BORE SIZES AVAILABLE UPON REQUEST

APPROVALS

DATE

DRAWN

CHECKED

PRODN

ISSUED

3/23/2011
7:39:32 AM

HELICAL PRODUCTS CO. INC

P.O. BOX 1069 SANTA MARIA, CA. 93456 U.S.A
PHONE (805) 928-3851 FSCI3201

TITLE **HELICAL FLEXIBLE SHAFT COUPLING**

TABULATED BORE SIZES

DWG NO

WAC20

ADDITION DATE	PART NUMBER	BORE TOLERANCES		TORQUES (Nm)			TORSIONAL FLEXIBILITY deg/Nm	MASS MOMENT OF INERTIA	COMMENTS	A1	A2
		+.002in -.000in	or +.05mm -.00mm	Non-reversing	Shock or Reversing	Momentary					
09 Mar 88	WAC20-8mm-4M	* 8.00mm	.120in	.55	.27	1.1			Clearance Diam.:	23.61mm	
	WAC20-8mm-4mm	* 8.00mm	4.00mm	.55	.27	1.1			Clearance Diam.:	23.61mm	
	WAC20-8mm-4.50mm	* 8.00mm	4.50mm	.55	.27	1.1			Clearance Diam.:	23.61mm	
03 May 88	WAC20-8mm-6	* 8.00mm	.188in	.55	.27	1.1			Clearance Diam.:	23.61mm	
	WAC20-8mm-5mm	* 8.00mm	5.00mm	.55	.27	1.1			Clearance Diam.:	23.61mm	
	WAC20-8mm-5.7mm	* 8.00mm	5.70mm	.55	.27	1.1			Clearance Diam.:	23.61mm	
09 Mar 88	WAC20-8mm-6mm	* 8.00mm	6.00mm	.55	.27	1.1			Clearance Diam.:	23.61mm	
09 Mar 88	WAC20-8mm-8	* 8.00mm	.250in	.55	.27	1.1			Clearance Diam.:	23.61mm	
09 Mar 88	WAC20-8mm-10	* 8.00mm	* .313in	.55	.27	1.1			Clearance Diam.:	23.61mm	
09 Mar 88	WAC20-8mm-8mm	* 8.00mm	* 8.00mm	.55	.27	1.1			Clearance Diam.:	23.61mm	
23 Jun 10	WAC20-9mm-5mm	* 9.00mm	5.00mm	.55	.27	1.1			Clearance Diam.:	23.61mm	
09 Mar 88	WAC20-9mm-6mm	* 9.00mm	6.00mm	.55	.27	1.1			Clearance Diam.:	23.61mm	
22 Mar 11	WAC20-9mm-8mm	* 9.00mm	* 8.00mm	.55	.27	1.1			Clearance Diam.:	23.61mm	
	WAC20-9mm-9mm	* 9.00mm	* 9.00mm	.55	.27	1.1			Clearance Diam.:	23.61mm	
	WAC20-9.5mm-8mm	* 9.50mm	* 8.00mm	.55	.27	1.1			Clearance Diam.:	23.61mm	
09 Mar 88	WAC20-12-6mm	* .375in	6.00mm	.55	.27	1.1			Clearance Diam.:	23.61mm	
03 May 88	WAC20-12-8	* .375in	.250in	.55	.27	1.1			Clearance Diam.:	23.61mm	
12 Sep 89	WAC20-12-8mm	* .375in	* 8.00mm	.55	.27	1.1			Clearance Diam.:	23.61mm	
10 May 05	WAC20-12-12	* .375in	* .375in	.55	.27	1.1			Clearance Diam.:	23.61mm	
	WAC20-9.65mm-8.13mm	* 9.65mm	* 8.13mm	.55	.27	1.1			Clearance Diam.:	23.61mm	
28 JAN 14	WAC20-9mm-4mm	* 9.00mm	4.00mm	.55	.27	1.1			Clearance Diam.:	23.61mm	
21 OCT 14	WAC20-5.75mm-5.75mm	5.75mm	5.75mm	.55	.27	1.1					
21 APR 16	WAC20-9.5mm-9.5mm	* 9.50mm	* 9.50mm	.55	.27	1.1			Clearance Diam: 23.61mm		

* NOTE: Bores greater than 6.35mm Dia: bore depth is 9.70mm

NOTICE: THE INFORMATION AND DATA CONTAINED HEREIN IS CONSIDERED PROPRIETARY TO HELICAL PRODUCTS COMPANY, INC., AND SHALL REMAIN THE EXCLUSIVE PROPERTY OF HELICAL. THE HOLDER WILL ASSUME CUSTODY AND CONTROL THAT THIS DOCUMENT WILL NOT BE COPIED, REPRODUCED OR DISCLOSED WITHOUT THE EXPRESS WRITTEN CONSENT OF HELICAL. POSSESSION OF THIS DOCUMENT DOES NOT CONSTITUTE A GRANT TO MANUFACTURE ANY ITEMS.

ADDITIONAL BORE SIZES AVAILABLE UPON REQUEST

APPROVALS	DATE	HELICAL PRODUCTS CO. INC	
DRAWN		P.O. BOX 1069 SANTA MARIA, CA. 93456 U.S.A PHONE (805) 928-3851 FSCI3201	
CHECKED		TITLE	HELICAL FLEXIBLE SHAFT COUPLING
PRODN		TABULATED BORE SIZES	
ISSUED	3/23/2011 7: 39: 32 AM	DWG NO	WAC20

Printed 3/23/2011 7: 40: 35 AM by Larry Vg